



Rho G Polyclonal Antibody

Catalog No	YP-Ab-16241
Isotype	IgG
Reactivity	Human;Mouse;Rat
Applications	WB;IHC;IF;ELISA
Gene Name	RHOG
Protein Name	Rho-related GTP-binding protein RhoG
Immunogen	The antiserum was produced against synthesized peptide derived from human RHOG. AA range:97-146
Specificity	Rho G Polyclonal Antibody detects endogenous levels of Rho G protein.
Formulation	Liquid in PBS containing 50% glycerol, 0.5% BSA and 0.02% sodium azide.
Source	Polyclonal, Rabbit,IgG
Purification	The antibody was affinity-purified from rabbit antiserum by affinity-chromatography using epitope-specific immunogen.
Dilution	WB: 1/500 - 1/2000. IHC: 1/100 - 1/300. ELISA: 1/40000.. IF 1:50-200
Concentration	1 mg/ml
Purity	≥90%
Storage Stability	-20°C/1 year
Synonyms	RHOG; ARHG; Rho-related GTP-binding protein RhoG
Observed Band	23kD
Cell Pathway	Cell membrane ; Lipid-anchor ; Cytoplasmic side .
Tissue Specificity	Brain,PCR rescued clones,
Function	function:Required for the formation of membrane ruffles during macropinocytosis. Required for the formation of cup-like structures during trans-endothelial migration of leukocytes. In case of Salmonella enterica infection, activated by SopB and SGEF, which induces cytoskeleton rearrangements and promotes bacterial entry.,similarity:Belongs to the small GTPase superfamily. Rho family.,subunit:Interacts with SGEF.,
Background	This gene encodes a member of the Rho family of small GTPases, which cycle between inactive GDP-bound and active GTP-bound states and function as molecular switches in signal transduction cascades. Rho proteins promote reorganization of the actin cytoskeleton and regulate cell shape, attachment, and motility. The encoded protein facilitates translocation of a functional guanine nucleotide exchange factor (GEF) complex from the cytoplasm to the plasma membrane where ras-related C3 botulinum toxin substrate 1 is activated to promote lamellipodium formation and cell migration. Two related pseudogene



have been identified on chromosomes 20 and X. [provided by RefSeq, Aug 2011],

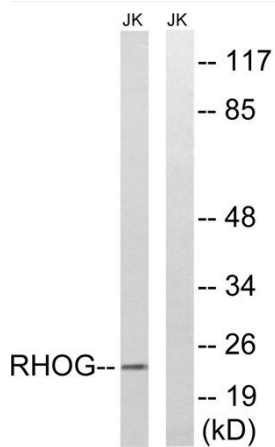
matters needing attention

Avoid repeated freezing and thawing!

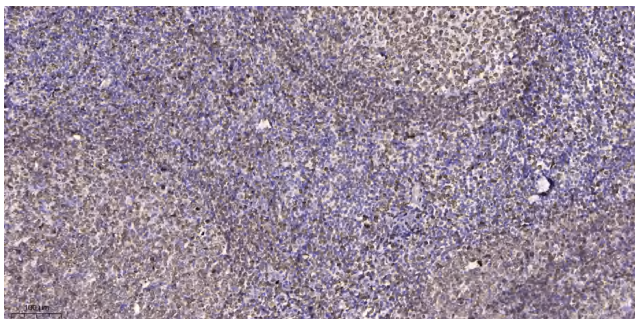
Usage suggestions

This product can be used in immunological reaction related experiments. For more information, please consult technical personnel.

Products Images



Western blot analysis of lysates from Jurkat cells, using RHOG Antibody. The lane on the right is blocked with the synthesized peptide.



Immunohistochemical analysis of paraffin-embedded human tonsil. 1, Antibody was diluted at 1:200(4° overnight). 2, Tris-EDTA,pH9.0 was used for antigen retrieval. 3,Secondary antibody was diluted at 1:200(room temperature, 45min).